

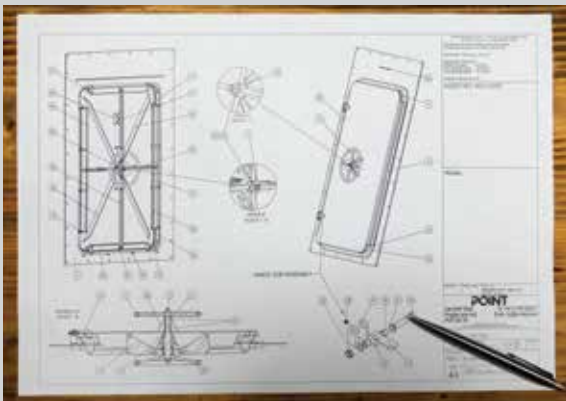
Precision-Driven Solutions for Industry

At Point Engineering, we deliver end-to-end engineering services designed to meet the demands of modern manufacturing and industrial operations. With a skilled team and advanced technology, we ensure every project is executed with accuracy, durability, and efficiency.



Our Core Capabilities:

- **Coded Welding** – Certified welding for structural integrity and long-term performance
- **Custom Fabrication** – Bespoke metalwork built to your exact specifications
- **Laser Cutting** – High-precision profiling for complex shapes and fine detail
- **CNC Press Brake** – Automated bending for consistent, high-tolerance results
- **CNC Machining** – Precision machining for intricate and critical components
- **Manual Machining** – Expert craftsmanship for one-off and detailed parts
- **Sheet Metalwork** – Versatile solutions for enclosures, panels, and assemblies
- **Shot Blasting** – Surface preparation for optimal coating adhesion and finish
- **Powder Coating** – Tough, attractive finishes for corrosion resistance and aesthetics
- **Industrial Painting** – Professional-grade coatings for protective and visual appeal



Why Partner with Point Engineering?

- Proven expertise across sectors including offshore, marine, and industrial fabrication
- Fast turnaround and responsive service tailored to your project timelines
- Commitment to quality, compliance, and customer satisfaction

Let's engineer success together. Contact us today to discuss your next project.



Design - Build - Test - Install